

Wall mounted inlet

Part no. 367

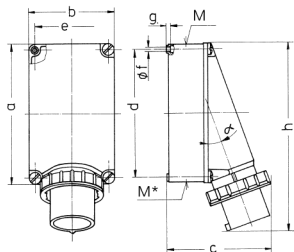


- screw terminals

Technical specifications

Ampere	125 A
Poles	5 p
Voltage	230 V
Clock position	9 h
Hertz	50-60 Hz
Connection technology	Screw terminals
Contact	standard
Protection type	IP67
Weight	2178 g
Declaration of Conformity	EAC, CQC

Drawing



Drawing	Amp.	63			125	
		Poles			4	5
2 MB 36		3	4	5	4	5
Dim. in mm						
a	170	170	170	264	264	
b	118	118	118	163	163	
c	171	171	171	205	205	
d	134.5	134.5	134.5	240	240	
e	103	103	103	140	140	
f	6,1	6,1	6,1	8,1	8,1	
g	6	6	6	8	8	
h	250	250	250	355	355	
M	40	40	40	50	50	
M*	2x40	2x40	2x40	50	50	
a	25°	25°	25°	20°	20°	
Max. cable diam. (mm)	27	27	27	38	38	
Terminal for cond. cross section (mm²) min.-max.	6	6	6	16	16	
	-16	-16	-16	-35	-35	