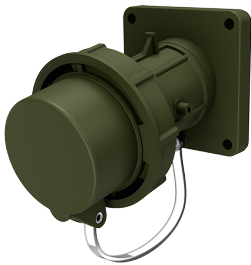


Panel mounted inlet TM

Part no. 20461

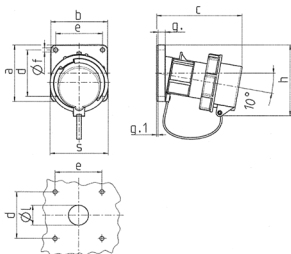


- screw terminals
- highly heat resistant contact carrier
- nickel plated contacts
- with protective cap
- (form BP)

Technical specifications

Ampere	16 A
Poles	5 p
Voltage	400 V
Clock position	6 h
Hertz	50-60 Hz
Connection technology	Screw terminals
Contact	standard
Protection type	IP67
Weight	290 g
Certifications	VDE, EAC

Drawing



Drawing	Amp.	16			32			63		
		Poles			Poles			Poles		
2 MB 62		3	5	3	4	5	3	4	5	
Dim. in mm		a	85	85	85	85	85	108	108	108
		b	85	85	85	85	85	101	101	101
		c	132	132	131	131	137	164	164	164
		d	70	70	70	70	70	85	85	85
		e	70	70	70	70	70	77	77	77
		f	6.3	6.3	6.3	6.3	6.3	6.5	6.5	6.5
		g.	11	11	11	11	11	12	12	12
		g.1	2	2	2	2	2	2	2	2
		h	100	107	108	108	111	130	130	130
		s	70	87	94	94	102	114	114	114
		l	30	30	30	30	30	40	40	40
Terminal for cond. cross		1	1	2,5	2,5	2,5	2,5	6	6	6
section (mm²) min.-max.			-2,5	-2,5	-6	-6	-6	-16	-16	-16