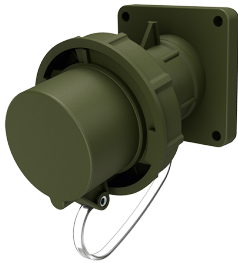


Panel mounted inlet TM

Part no. 23249

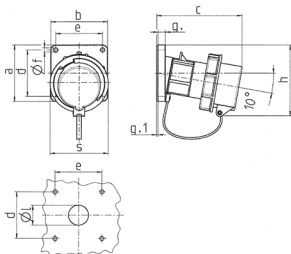


- screw terminals
- highly heat resistant contact carrier
- nickel plated contacts
- with protective cap
- (form BP)

Technical specifications

Ampere	32 A
Poles	3 p
Voltage	230 V
Clock position	6 h
Hertz	50-60 Hz
Connection technology	Screw terminals
Contact	nickel plated contacts, highly heat resistant contact carrier
Protection type	IP67
Weight	314 g
Certifications	VDE, EAC

Drawing



Drawing	Amp.	16			32			63		
		Poles			3	4	5	3	4	5
2 MB 62										
Dim. in mm		a	b	c	d	e	f	g.	g.1	h
		85	85	85	85	85	108	108	108	101
		85	85	85	85	85	101	101	101	132
		132	132	131	131	137	164	164	164	70
		70	70	70	70	70	85	85	85	70
		70	70	70	70	70	77	77	77	6.3
		6.3	6.3	6.3	6.3	6.3	6.5	6.5	6.5	11
		11	11	11	11	11	12	12	12	2
		2	2	2	2	2	2	2	2	100
		100	107	108	108	111	130	130	130	70
		70	87	94	94	102	114	114	114	30
		30	30	30	30	30	40	40	40	1
		1	1	2,5	2,5	2,5	6	6	6	
Terminal for cond. cross section (mm ²) min.-max.		—2.5—2.5	—6—6	—6—6	—6—6	—6—6	—16—16	—16—16	—16—16	